



TYPE D



TYPE C



NAME: LED Flood Light

P/N: AST-S-G04-100WXYA1

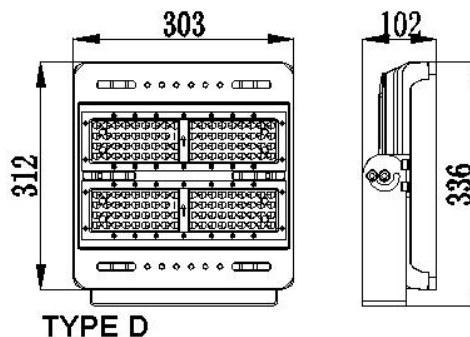
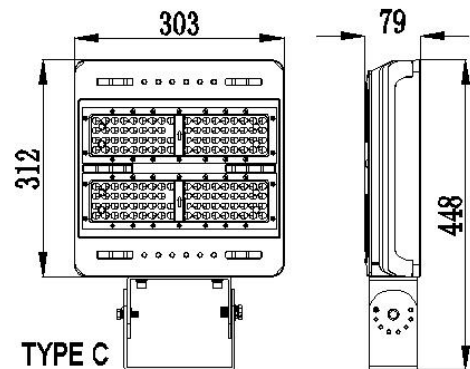
Note: Where "X" stands for LED manufacture, could be any alphabet, Where "Y" can be "T1" to "T9", represents different Diffuser light angle type employed

**Advantage:**

- UL cUL certificate
- LUMILEDS Chip, high CRI
- IP65 driver, input voltage 100-277VAC
- No UV or IR in the beam
- Easy to install and operate
- Energy saving, long lifespan
- Light is soft and uniform, safe to eyes
- Instant start, NO flickering, NO humming
- Green and eco-friendly without mercury.

**Application:**

- 1. Outdoor basketball court, tennis court.
- 2. Badminton court, the football field.
- 3. The school playground, stadium.
- 4. Community leisure entertainment plaza, road lamp etc.



## Product Specifications

Product Name	LED Flood Light	
Light Type	AST-S-G04-100WXYA1	
Stent type	TYPE C	TYPE D
Dimension	448*303*79mm	336*303*102mm

## Technical Characteristic

Color temperature	2700-6500K				
CRI	>70				
Lumen	11500-13500LM				
Lumen Efficacy	115-135 LM/W				
Input Power	100W				
Standard Viewing Angle	150*85 Degree (Type III)				
Optional Viewing Angle	40 Degree	60 Degree	90 Degree	150*75 Degree (Type II)	160 Degree (Type V)
Input Voltage	100-277V 50/60Hz				
Driver model	China Brand Driver				
PF	>0.9				
Waterproof Rating	IP65				

## Materials

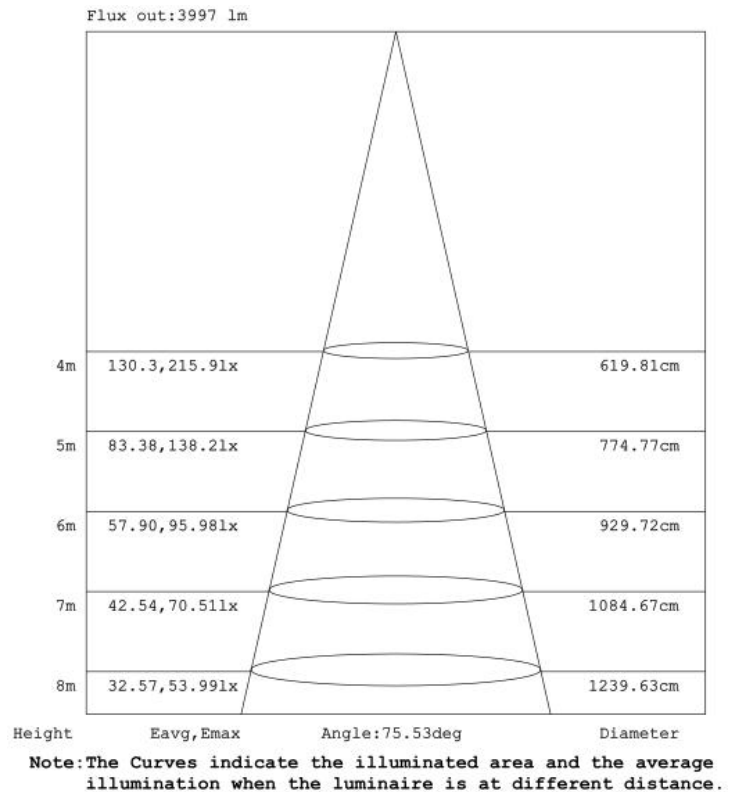
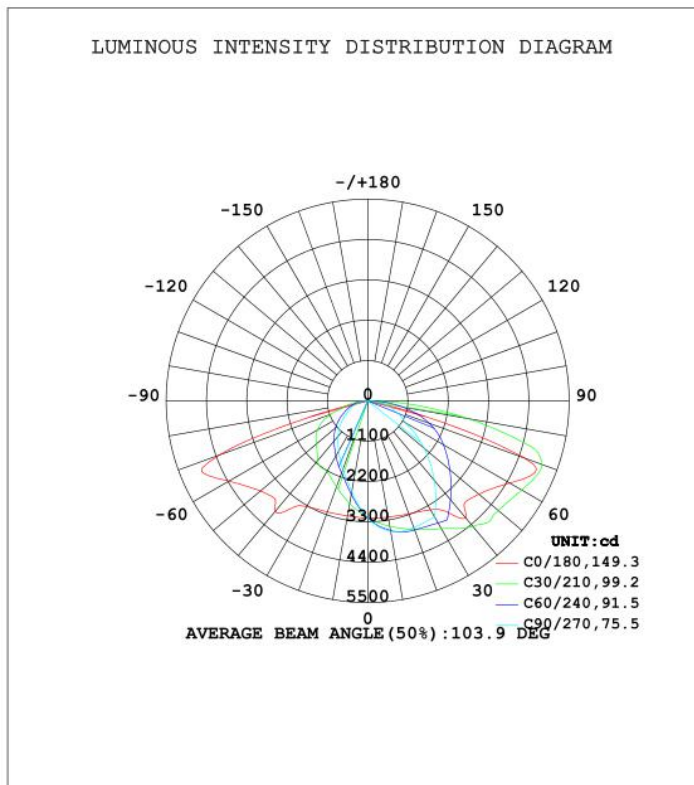
LED Brand	LUMILEDS
LED Type	LUXEON 3030 2D (1.5W)
LED QTY	112PCS
Housing	Aluminum Alloy
Housing color	Black
Optional Accessory	Photocell / Surge protector
Optional Stent	TYPE C / TYPE D
Operating Temperature	-40°C TO 45°C
Operating Humidity	10%-90% RH
Storage Temperature	-40°C TO 80°C

## Others

Storage Humidity	10%-95%
Application	Outdoor
Safety Certification	UL、cUL
Warranty Time	5 Years

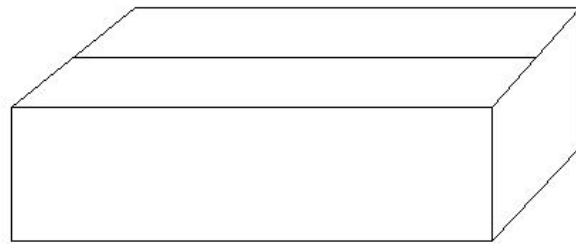
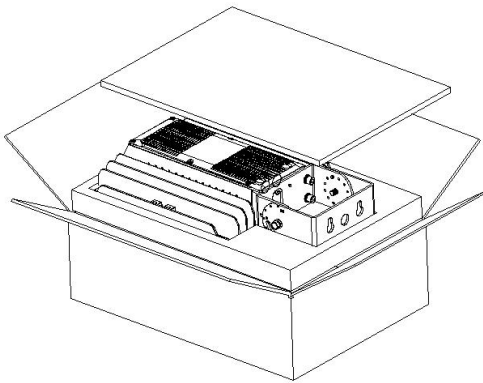
## Light Distribution Testing Parameters

DATA OF LAMP		PHOTOMETRIC DATA    Eff: 129.86 lm/W			
MODEL		I <sub>max</sub> (cd)	6026	S/MH (C0/180)	1.78
NOMINAL POWER (W)	100	LOR (%)	100.0	S/MH (C90/270)	0.76
RATED VOLTAGE (V)	120	TOTAL FLUX (lm)	12951	η UP, DN (C0-180)	0.0, 66.8
NOMINAL FLUX (lm)	12951.4	CIE CLASS	DIRECT	η UP, DN (C180-360)	0.0, 33.2
LAMPS INSIDE	1	η up (%)	0.0	CIBSE SHR NOM	1.25
TEST VOLTAGE (V)	120	η down (%)	100.0	CIBSE SHR MAX	1.35



## Package

Stent type	Lamps Net Weight	Size	Qty/Carton	Weight/Carton
TYPE C	5.7KG	560X360X155MM	1	6.7KG
TYPE D	5.6KG	395X360X155MM	1	6.5KG



## Notice For User

- ◆ Please turn off power before install or change assembly parts.
- ◆ The input voltage and lamps should be matched, after connecting the power line, Please make sure the wiring section is insulated.
- ◆ No-professionals, must not install and disassemble the lamps.

## Trouble Shootings

Troubles	Check points
Flickering of the light	Turn off the power and turn on again in 3 minutes. If same phenomena occur, then call agencies
Out of working	Please check the connection