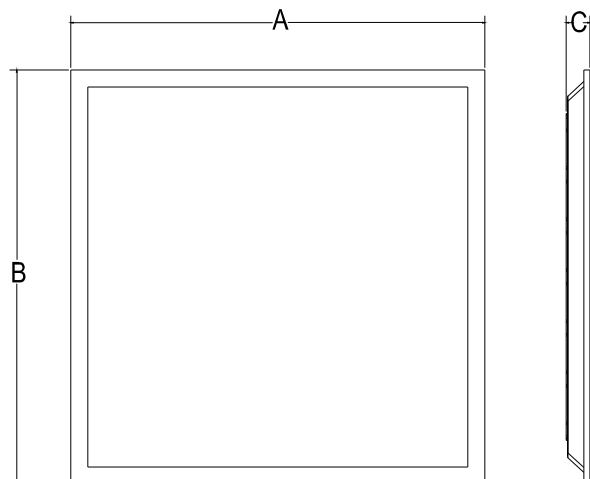


# SPECIFICATION

## LED Panel Light



Maximum overall	A	B	C
2*2ft	603mm	603mm	35mm
2*4ft	1213mm	603mm	35mm



## FEATURES

Input voltage: AC100-277V

Operating frequency: 50/60Hz

Power factor: > 0.95

Ambient temperature range: -20°C ~+45°C

Color Temp: 3000-5000K

Dimmable: 3-in-1 dimming

THD: ≤10%

IP Rating: IP40

CRI: >Ra80

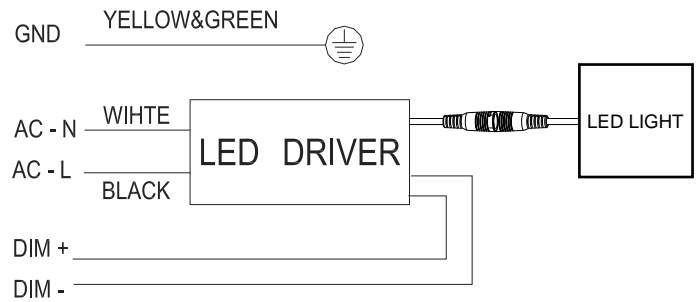
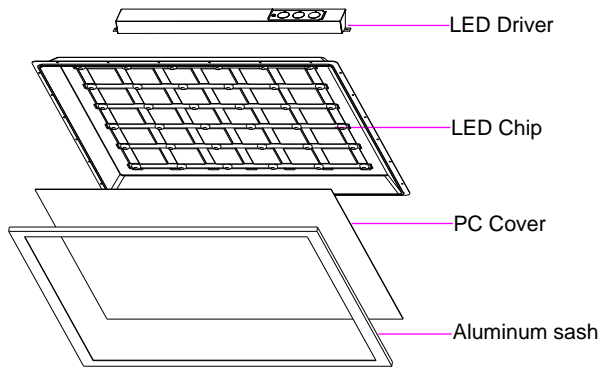
Beam angle: 120°

- Luminous Flux:>125lm/w
- Housing material:6063-T5
- 5 years' warranty
- ETL & DLC Premium

## PARAMETER

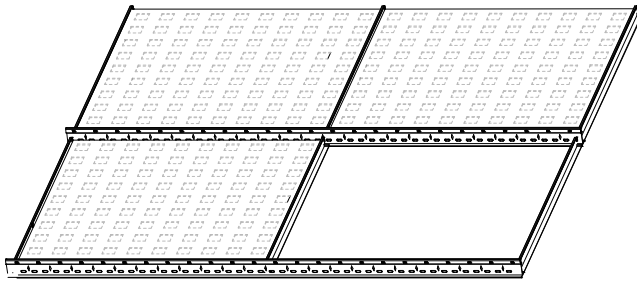
Length	Product code	Certification	CRI	Wattage	Description Function	Lumens 3000-5000K	Packing/carton	G.W./carton
2*2FT	ZS-BL2*2-F35-CC	ETL/cETLus,DLC,	>80	35W	3-in-1 dimming(0-10V;PWM;Rx)	3125 LM	650*250*650mm 6 pieces 1*40HQ Loading=3888pcs	14kg
	ZS-BL2*4-F40-CC	ETL/cETLus,DLC,	>80	40W	3-in-1 dimming(0-10V;PWM;Rx)	5000 LM		
2*4FT	ZS-BL2*4-F44-CC	ETL/cETLus,DLC,	>80	44W	3-in-1 dimming(0-10V;PWM;Rx)	5500 LM	1260*250*650mm 6 pieces 1*40HQ Loading=1944pcs	26.5kg
	ZS-BL2*4-F49-CC	ETL/cETLus,DLC,	>80	49W	3-in-1 dimming(0-10V;PWM;Rx)	6125 LM		
	ZS-BL2*4-F72-CC	ETL/cETLus,DLC,	>80	72W	3-in-1 dimming(0-10V;PWM;Rx)	9000 LM		

# MOUNTING GUIDES

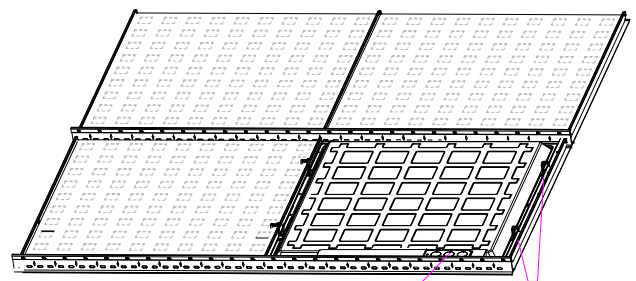


## INSTALLATION INSTRUCTION

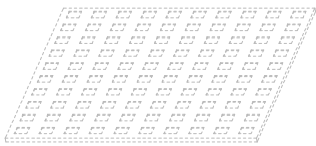
Step1



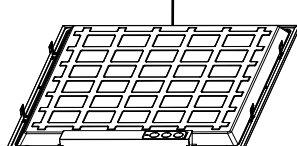
Step2



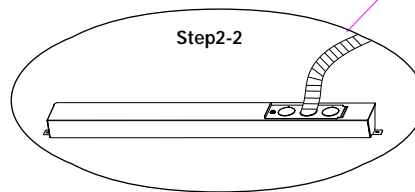
Step1-1



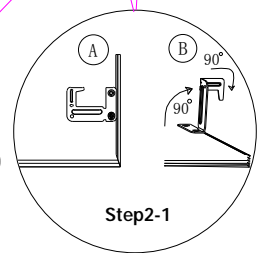
Step1-2



Step2-2



Step2-1



**Step 1:** Make sure of all the power is off before installing. Remove the one ceiling tile that you need to install light fixture on. Then place the light fixture on the T-bar carefully and make sure it is correctly in place and secure.

**Step 2:** Lift the 4 buckles on the back of the panel up by 90° then bend the top part of the buckles 90° towards the direction where you can anchor the light fixture to the T-bar.

**Step 3:** Place the driver on top of the lighting fixture in the back. Connect the cable between the driver and the lighting fixture. Open the driver's junction box and connect the AC wire to the driver correctly (L=black & N=white)

### Warning:

Make sure all the power is off before installation.

All the installations are required to be done by professionals.