

## LED Wall Pack Light Series

**Model No.:** XSY-WP40W  
XSY-WP60W  
XSY-WP100W  
XSY-WP120W

**Power:** 40W/60W/100W/120W

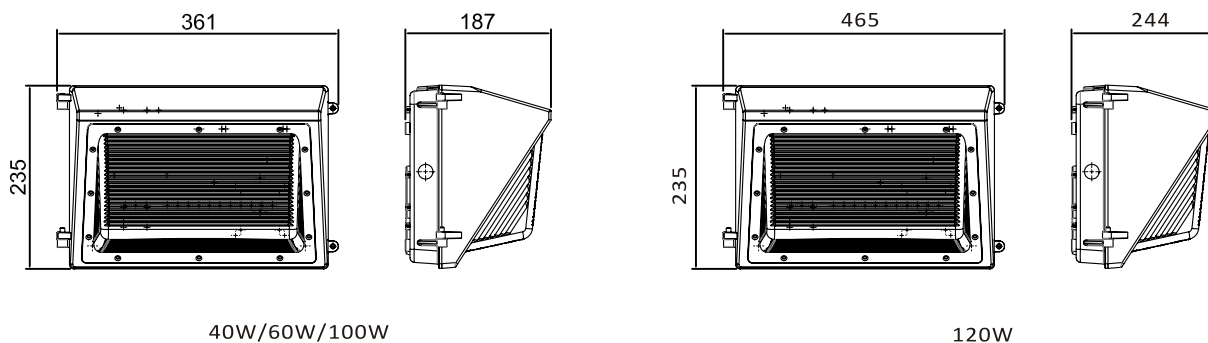


### 1.Features

- 40W/60W/100W/120W to replace 150W up to 500W MH.
- Universal voltage AC100-277V 50/60Hz.
- 110-120lm/W for fixture.
- Using high quality 3030 chips, LM-80 report and IES data available.
- UL/cUL driver.
- High Power Factor >0.9, Low THD Driver.
- 100% Die-cast aluminum housing, the surface electrostatic spraying, anti-acid coating anti-aging, high temperature.
- High transparent PC material, prism is designed, the light is downy, to prevent glare.
- Dust-proof and waterproof, IP65.
- 5 years Warranty.
- Available with Photocell Sensor.
- UL/DLC/Lighting facts certificate.

### 2.Drawing

Unit:mm





### 3.Application

Widely used in corridor, balcony, parking lot or other outside wall of building area lighting etc.

### 4.Parameters

|                       |                               |               |               |               |
|-----------------------|-------------------------------|---------------|---------------|---------------|
| Model                 | XSJ-WP40W                     | XSJ-WP60W     | XSJ-WP100W    | XSJ-WP120W    |
| Power                 | 40W                           | 60W           | 100W          | 120W          |
| Efficacy              | 110-120lm/W                   |               |               |               |
| Color Temperature     | 3000K/4000K/5000K/5700K       |               |               |               |
| LED                   | 3030                          |               |               |               |
| Power Factor          | >0.9                          |               |               |               |
| Input Voltage         | 100-277Vac                    |               |               |               |
| THD                   | <20%                          |               |               |               |
| Weight                | 3.1Kg                         | 4.0Kg         | 4.8Kg         | 7.9Kg         |
| Dimension             | 360x235x187mm                 | 360x235x187mm | 360x235x187mm | 465x230x244mm |
| Housing               | Die-cast aluminum             |               |               |               |
| Lens                  | PC                            |               |               |               |
| Mounting              | Recessed Outlet or to surface |               |               |               |
| Operation Temperature | -35°C~55°C                    |               |               |               |
| Humidity              | 20%~85%,non condensing        |               |               |               |
| Finish                | Brown                         |               |               |               |
| IP rated              | Ip65                          |               |               |               |
| Certificate           | UL,DLC,ETL,LM80               |               |               |               |
| Material Usage        | RoHS compliant                |               |               |               |
| Driver Class          | Class II                      |               |               |               |
| LED Class             | LM80 rated to 50,000 hours    |               |               |               |

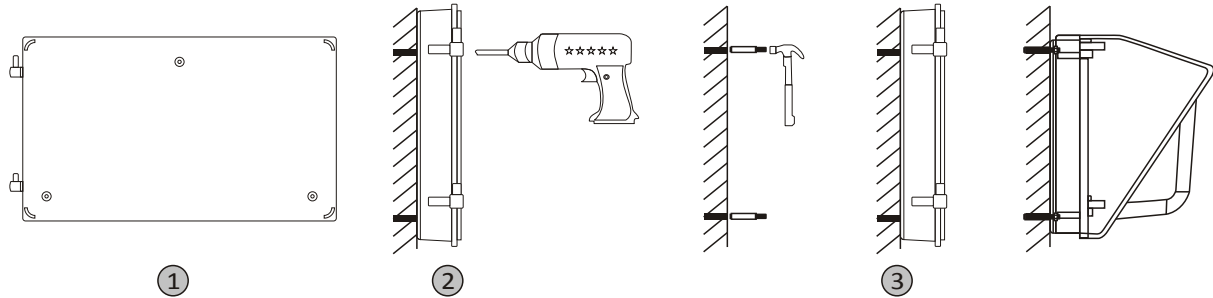


LM80 IP65

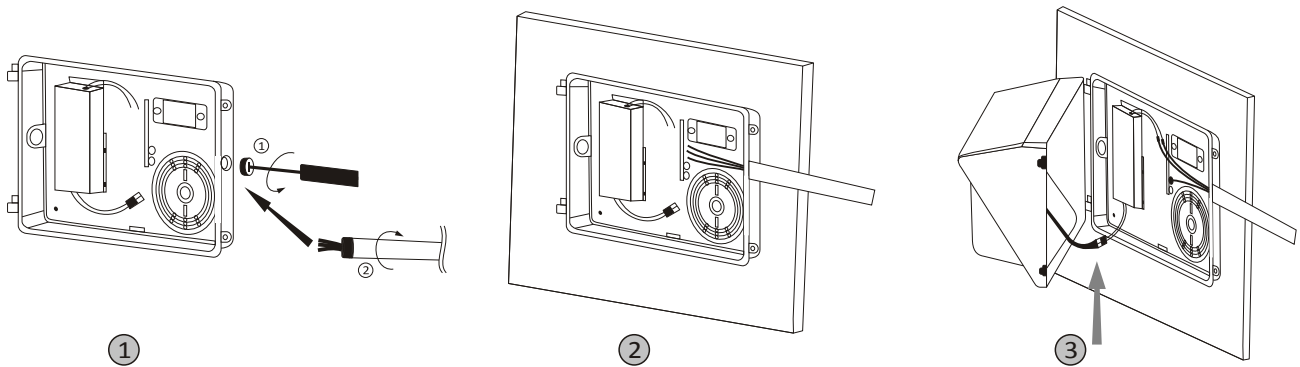


## 5.Installation

\*Install height from floor higher than 1.2m.



1. Take apart the PC cover and fixture housing.
2. Put the fixture on the wall, drill 3 holes to get through the.
3. Get expansion screws into the holes, match the fixture to the bolts, then fix the fixture on the wall by screws lastly get the PC cover and fixture housing back together.



1. Loosen screws and remove the front lens set carefully from the back plate.
2. Remove 1/2" plug from where you intend to feed conduit.
3. Drilling out the holes (C) to secure it on the wall with choosing proper screws.
4. Finish wiring (Black for line, White for neutral and Green/Yellow Green for ground).
5. Replace the lens set on the hinge and finish connection, Close the lens set and tighten the screws to fasten the lens set to the back plate.

## 6.Packaging

| No. | Model      | Power | N.W.  | Inner Box | G.W   | Qty/ctn | Outer Carton  |
|-----|------------|-------|-------|-----------|-------|---------|---------------|
| 1   | XSY-WP40W  | 40W   | 3.1Kg | —         | 3.7Kg | 1       | 385x260x230mm |
| 2   | XSY-WP60W  | 60W   | 4.0Kg | —         | 4.6Kg | 1       | 385x260x230mm |
| 3   | XSY-WP100W | 100W  | 4.8Kg | —         | 5.4Kg | 1       | 385x260x230mm |
| 4   | XSY-WP120W | 120W  | 7.9Kg | —         | 8.5Kg | 1       | 490x270x280mm |



LM80 IP65

