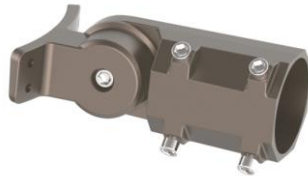




GM



AM

P/N: AST-GS03-150WXYDA1-abcdef

Note:

AST= Company name;

GS03 = Product series, LED Garden Light;

150W = Rating Power;

“X” stands for LED manufactory, could be any letter, “B” for Lumileds;

“Y” represents diffuser light angle type: “T3” for TYPE III; “T5” for TYPE V;

D=Color Tunable;

A1= 120-277VAC

“a” can be any two letters to represent lamp colors, BR=Brown, BH=Black, or Customized;

“b” can be “3RP”, “3NP”, “5RP”, “5NP”, “7RP” or “7NP” for

Photocontrol type provided or blank for no Photocontrol provided;

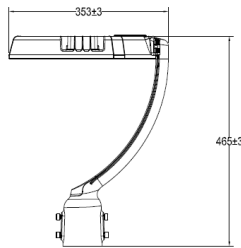
“c” can be “10SP” or “20SP” for Surge-protective Device type provided or blank for no Surge-Protective Device provided;

“d” can be “W” or blank for Wattage Adjustable or not;

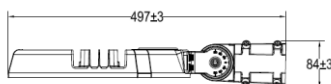
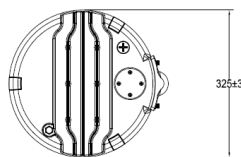
“e” can be “AM”, “DM” or “A&D” to represent mounting bracket types;

“f” can be any two digits to represent CCT;

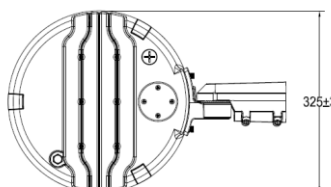
DIMENSIONS



GM



AM



ADVANTAGE

- UL cUL certificate;
- Lumileds Chip, high CRI;
- Input voltage 120-277VAC;
- Output constant current lever can be adjusted through output cable with 0-10V;
- No UV or IR in the beam;
- Easy to install and operate;
- Energy saving, long lifespan;
- Light is soft and uniform, safe to eyes;
- Instant start, NO flickering, NO humming;
- Green and eco-friendly without mercury;

APPLICATION

- City Slow Lane、Narrow Lane;
- Residential Area、Plaza;
- Sightseeing Area、Village Road and so on;

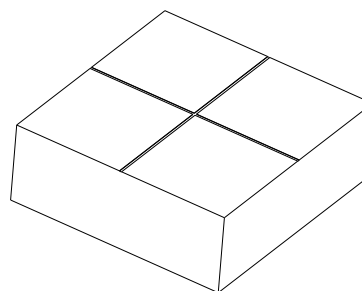
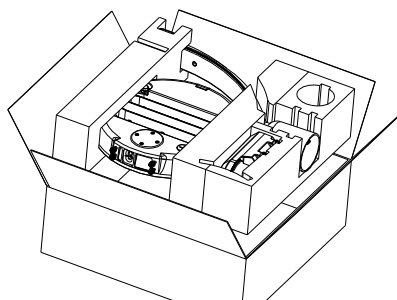
SPECIFICATIONS

OPTICAL	Input Power (Tolerance : ±10%)	150W (Wattage Adjustable Range: 25%-100%)	
	Color Temperature(Color Tunable)	4000K	5000K
	Lumen (Tolerance : ±10%)	19500-21000 LM	18750-20250 LM
	Efficacy (Tolerance : ±3%)	130-140 LM/W	125-135 LM/W
	CRI	>80	
	Color Consistency	<7 Steps (or <7 SDCM)	
	BUG	B3-U0-G3	
	Distribution Pattern	Type III (Optional: TYPE V)	
Beam Angle (50%) (Tolerance : ±15%)	155*90 Degree Type III		
ELECTRICAL	Input Voltage and Frequency	120-277VAC, 50/60Hz	
	PF (Tolerance : -3%)	≥0.9	
	THD (Tolerance : +5%)	≤20%	
	Flicker Percent	<30%	
	Driver Brand	BECKY	
	Driver Model	BQE155C-130-PVF-PS	
	Driver Surge protection	L/N-PE: 4kV, L-N: 6kV	
	Dimming	0-10V dimming standard	
	Sensor Type	Exterior Photocell, Integral Sensor Receptacle	
	Optional Accessory	Photocontrol, Surge-protective Device, photocell receptacle, shorting cap	
MATERIALS	LED Brand	Lumileds	
	LED Type	SMD2835	
	LED QTY	5000K:187 PCS/ 3000K:143pcs	
	Housing	Die-cast aluminum	
	Housing Color	Brown, Black, or Customized	
	EPA	1.3 ft ²	
	Waterproof Rating	WET (IP65)	
OTHERS	Operating Temperature	-40°C TO 50°C	
	Storage Temperature	-40°C TO 80°C	
	Operating Humidity	5% - 95% RH	
	Storage Humidity	5% - 95% RH	
	Warranty	5 years	

PACKAGE

Bracket Type	Carton Size	Qty / Carton	Net Weight / Carton	Gross Weight / Carton
AM	490*470*145mm	1 PC	4.2kg	5.5kg
GM	490*470*145mm	1 PC	4.6kg	5.8kg

Tolerance of Carton Size: ±15 MM, Tolerance of Weight: ±10%.



LIGHT DISTRIBUTION TESTING PARAMETERS < Type III >

Luminaire Property

Luminaire Manufacturer:

Voltage: 121.2 V

Power: 144.30 W

Current: 1.202 A

Power Factor: 0.991

Photometric Results

IES Classification: Type III

Total Rated Lamp Lumens: 20388.9 lm

Efficiency: 100%

Upward Ratio: 0%

Central Intensity: 4905.69 cd

Pos of Max. Intensity: H157.5 V69

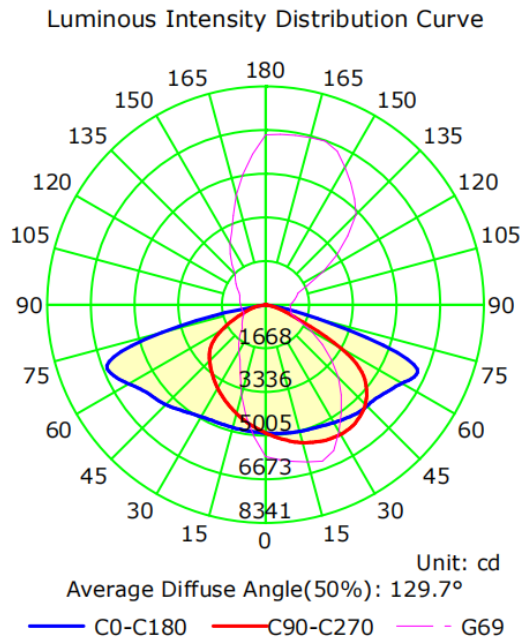
Longitudinal Classification: Medium

Measurement Flux: 20388.9 lm

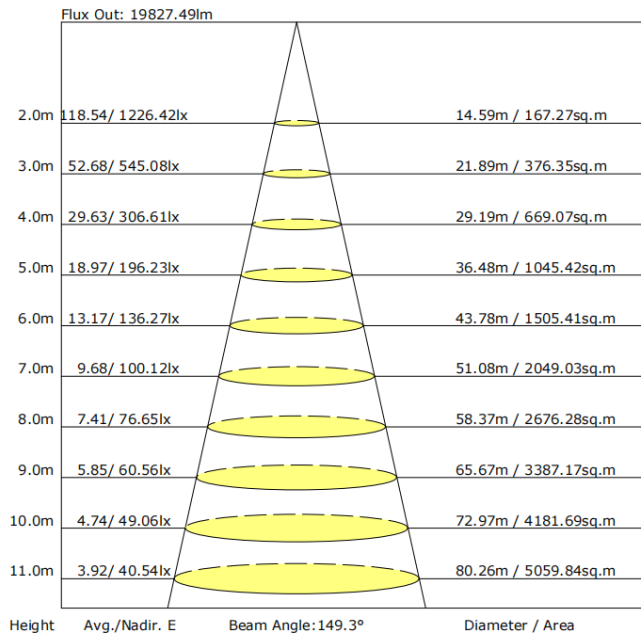
Downward Ratio: 100%

Luminaire Efficacy Rating (LER): 141.34

Max. Intensity: 6673.38 cd



The Average Illuminance Effective Figure



NOTICE FOR USER

- Please turn off power before install or change assembly parts.
- The input voltage and lamps should be matched, after connecting the power line, Please make sure the wiring section is insulated.
- No-professionals, must not install and disassemble the lamps.

TROUBLE SHOOTINGS

Troubles	Check points
Flickering of the light	Turn off the power and turn on again in 3 minutes. If same phenomena occur, then call agencies.
Out of working	Please check the connection.