

T8 LED TUBE Series - Bypass Ballast

DOUBLE SIDES LED SIGN TUBE, ENERGY EFFICIENT



T8 Double Sides LED Sign Tube - Clear Lens

(360° Brighter Double Sides Rotatable, Waterproof)

- Double Sides 360° Design with clear lens
- Double-end powered
- Base R17D rotatable- Bypass Ballast, No ballast needed
- Waterproof available
- Environmentally friendly without mercury
- 5 years warranty, rated for 50,000 hours



Input Voltage	AC100-277V	Viewing Angle	360°
PF	>0.9	Material	Aluminum+PC
CRI	>80	Operation Temperature	-68°C to 122°F
CCT	6500K	Environment	Dry, Damp
Base	Rotatable R17D	Rated Lifetime	50,000 hours
THD	<20%	Certification	ETL



+1 281 840 8608
+1 833 927 2533

5755 Bonhomme Rd #412 Houston, TX 77036
10004 Gulf FWY, Houston, TX 77034

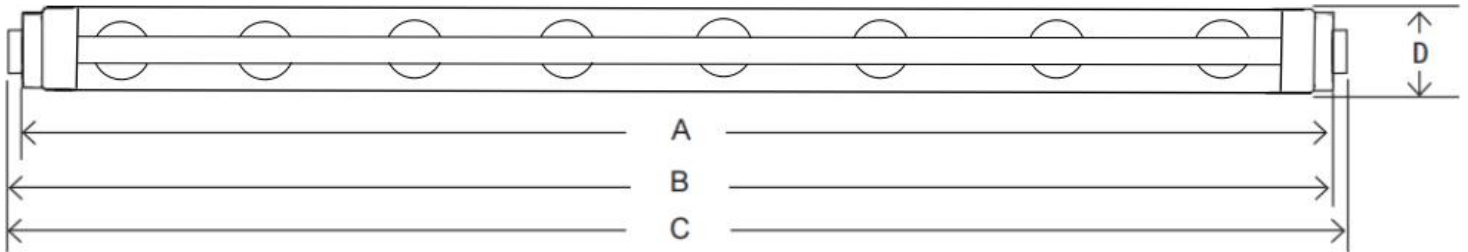
www.zaraled.com
info@zaraled.com

T8 LED TUBE Series - Bypass Ballast

DOUBLE SIDES LED SIGN TUBE, ENERGY EFFICIENT



Products Dimension



Model No.	A (mm)	B (mm)	C (mm)	D (mm)	Length (inch)	Wattage (W)
ZS-T8-D18in-15W	388	396	404	27.3	18	15
ZS-T8-D24in-18W	540	548	556	27.3	24	18
ZS-T8-D30in-20W	692	700	708	27.3	30	20
ZS-T8-D36in-20W	845	853	861	27.3	36	20
ZS-T8-D42in-25W	996	1004	1012	27.3	42	25
ZS-T8-D48in-28W	1148	1156	1164	27.3	48	28
ZS-T8-D60in-36W	1453	1461	1469	27.3	60	36
ZS-T8-D64in-40W	1556	1564	1572	27.3	64	40
ZS-T8-D72in-40W	1758	1766	1774	27.3	72	40
ZS-T8-D84in-48W	2062	2070	2078	27.3	84	48
ZS-T8-D96in-50W	2369	2377	2385	27.3	96	50
ZS-T8-D108in-55W	2671	1679	2687	27.3	108	55
ZS-T8-D117in-56W	2899	2907	2915	27.3	117	56
ZS-T8-D120in-60W	2975	2983	2991	27.3	120	60



+1 281 840 8608
+1 833 927 2533

5755 Bonhomme Rd #412 Houston, TX 77036
10004 Gulf FWY, Houston, TX 77034

www.zaraled.com
info@zaraled.com

T8 LED TUBE Series - Bypass Ballast

DOUBLE SIDES LED SIGN TUBE, ENERGY EFFICIENT



Product structure

R17D/HO Base
Double-end powered

- Double side bright, unique design
- SMD2835
- Direct installing, easy operation
- Running without ballast and starter
- 5 Years Warranty, Rated for 50,000 hours

Clear Lens Design

Waterproof Design

Double Sides
360°

WARRANTY 5 YEAR

50K HOURS

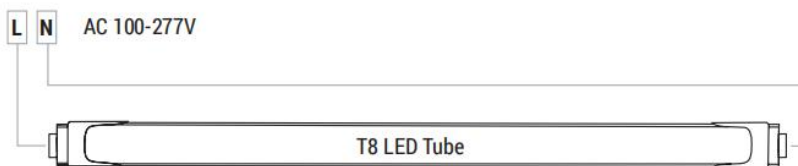
ETL US
Infinite K
5003119

CE

RoHS

ISO 9001

Installation Instructions



1. Switch off power
2. Remove fluorescent tube
3. Bypass the ballast
4. Install LED tube
5. Switch on power



+1 281 840 8608
+1 833 927 2533

5755 Bonhomme Rd #412 Houston, TX 77036
10004 Gulf FWY, Houston, TX 77034

www.zaraled.com
info@zaraled.com

T8 LED TUBE Series - Bypass Ballast

DOUBLE SIDES LED SIGN TUBE, ENERGY EFFICIENT



Packing information

Model No.	Dimension	PCS/CTN	Dimensions / CTN	Net Weight / CTN	Gross weight / CTN
ZS-T8-D18in-15W	18 inch	50	46×38.5×21 cm	6.50 KG	8.20 KG
ZS-T8-D24in-18W	24 inch	50	61×38.5×21 cm	8.5 KG	10.20 KG
ZS-T8-D30in-20W	30 inch	50	76×38.5×21 cm	10.5 KG	12.40 KG
ZS-T8-D36in-20W	36 inch	50	91×38.5×21 cm	13.00 KG	15.10 KG
ZS-T8-D42in-25W	42 inch	50	108×38.5×21 cm	15.00 KG	17.30 KG
ZS-T8-D48in-28W	48 inch	25	121×20×21 cm	8.00 KG	9.25 KG
ZS-T8-D60in-36W	60 inch	25	151×20×21 cm	10.50 KG	11.78 KG
ZS-T8-D64in-40W	64 inch	25	161×20×21 cm	11.50 KG	11.78 KG
ZS-T8-D72in-40W	72 inch	25	181×20×21 cm	12.5 KG	14.20 KG
ZS-T8-D84in-48W	84 inch	20	211×20×16 cm	11.80 KG	13.21 KG
ZS-T8-D96in-50W	96 inch	20	241×20×16 cm	13.00 KG	15.30 KG
ZS-T8-D108in-55W	108 inch	20	272×20×16 cm	15.00 KG	17.8 KG
ZS-T8-D117in-56W	117 inch	20	272×20×16 cm	15.00 KG	17.8 KG
ZS-T8-D120in-60W	120 inch	20	302×20×16 cm	17.00 KG	19.80 KG



+1 281 840 8608
+1 833 927 2533

5755 Bonhomme Rd #412 Houston, TX 77036
10004 Gulf FWY, Houston, TX 77034

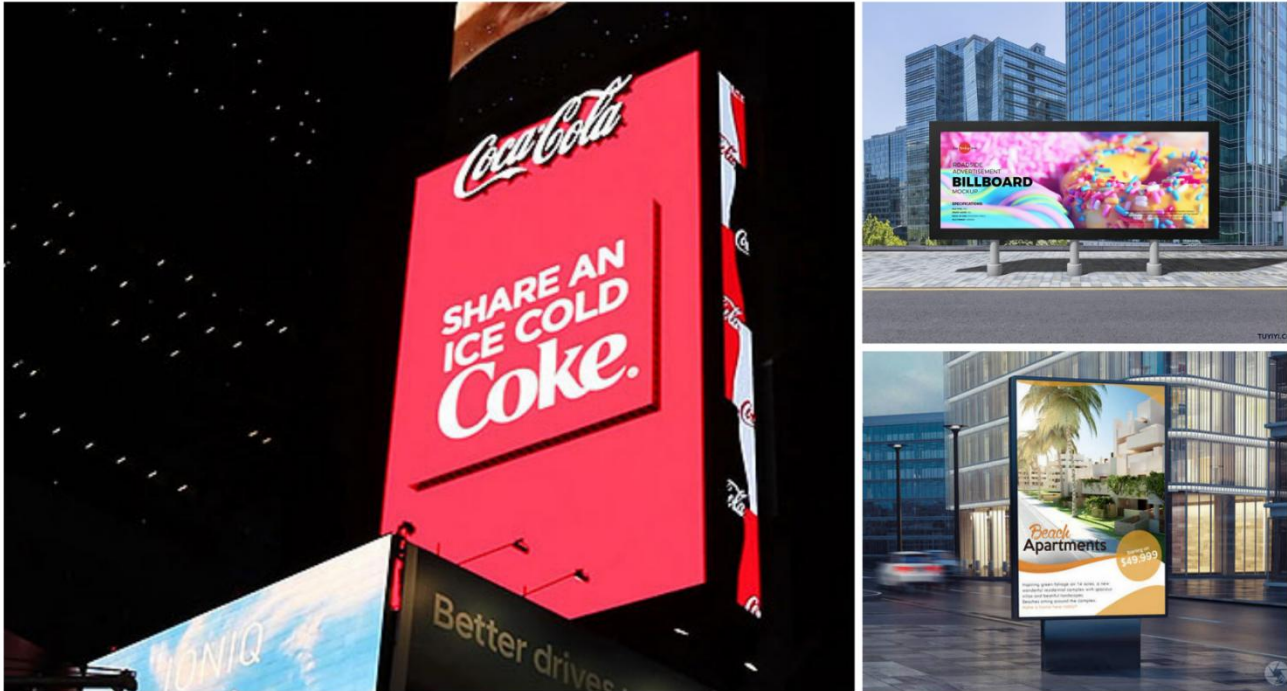
www.zaraled.com
info@zaraled.com

T8 LED TUBE Series - Bypass Ballast

DOUBLE SIDES LED SIGN TUBE, ENERGY EFFICIENT



Applications



DOUBLE SIDES SIGN LED Tubes used in life

CAUTIONS

- Please read the product specification carefully first to confirm that the working environment is in line with the condition on the specification before it is used.
- Please confirm the input voltage and frequency before use.
- The light must be installed by professional personnel.
- If the power cord and case of the products are damaged, it will be regarded as disqualified product and should not be used.
- Dangerous high voltage. Non professional personnel should not repair.
- If external soft cable or wire of the product is damaged, the wire should be replaced by manufacturer or service agent or personnel with similar qualification to avoid danger.



+1 281 840 8608
+1 833 927 2533

5755 Bonhomme Rd #412 Houston, TX 77036
10004 Gulf FWY, Houston, TX 77034

www.zaraled.com
info@zaraled.com