

T8 LED TUBE Series - Bypass Ballast

DOUBLE SIDES LED SIGN TUBE, ENERGY EFFICIENT



T8 Double Sides LED Sign Tube - Clear Lens

(360° Brighter Double Sides Rotatable, Waterproof)

- Double Sides 360° Design with clear lens
- Double-end or One-end powered
- Base R17D rotatable- Bypass Ballast, No ballast needed
- Waterproof available
- Environmentally friendly without mercury
- 5 Years Warranty, Rated for 50,000 hours



T8 LED SIGN TUBE Double Sides 360° Design
Super Bright with Clear Lens, Waterproof Available



+1 281 840 8608
+1 833 927 2533

5755 Bonhomme Rd #412 Houston, TX 77036
10004 Gulf FWY, Houston, TX 77034

www.zaraled.com
info@zaraled.com

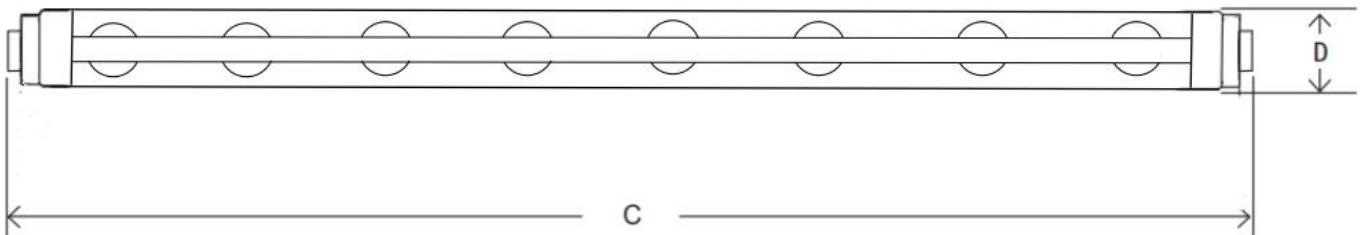
T8 LED TUBE Series - Bypass Ballast

DOUBLE SIDES LED SIGN TUBE, ENERGY EFFICIENT

Product Specification

Input Voltage	AC100-277V or 100-347V	Viewing Angle	360°
PF	>0.9	Material	Aluminum+PC
CRI	>80	Operation Temperature	-68°C to 122°F
CCT	3000K-6500K	Environment	Dry, Damp
Base Type	Rotatable R17D	Rated Lifetime	50,000 hours
THD	<20%	Certification	ETL

Product Dimension



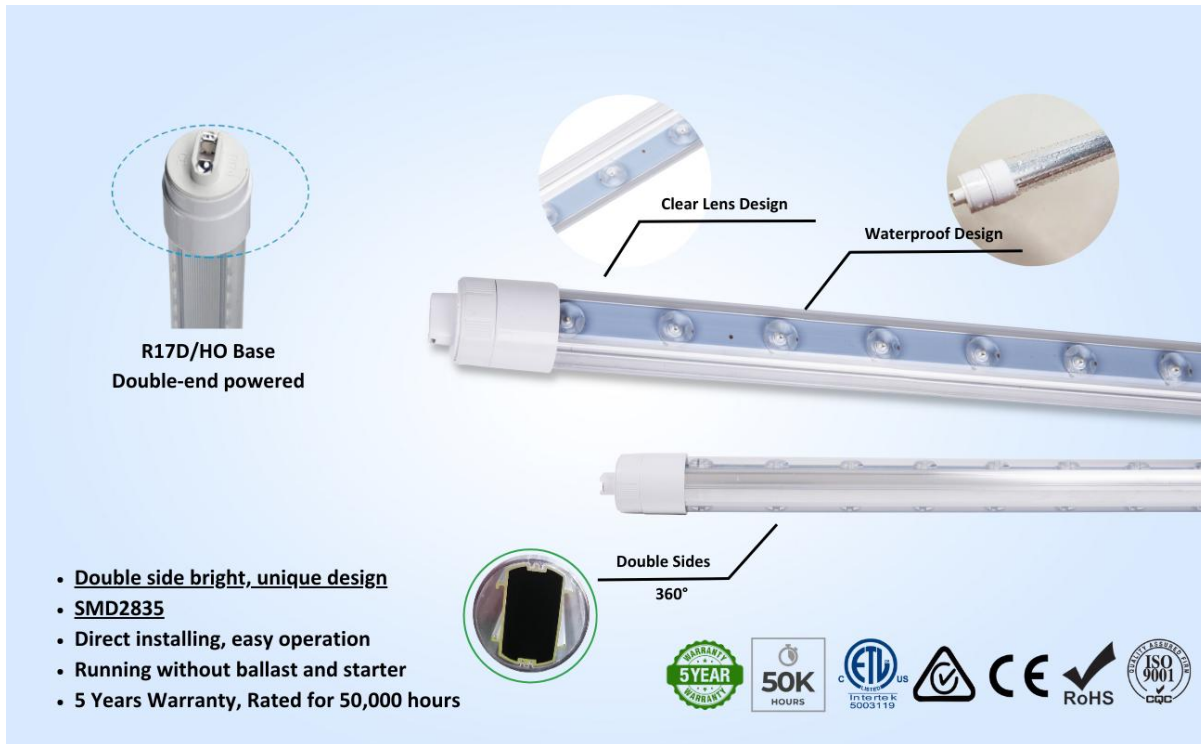
Length(C)	18 inch	24 inch	30 inch	36 inch	42 inch	48 inch	60 inch
Length(C)	64 inch	72 inch	84 inch	96 inch	108 inch	117 inch	120 inch



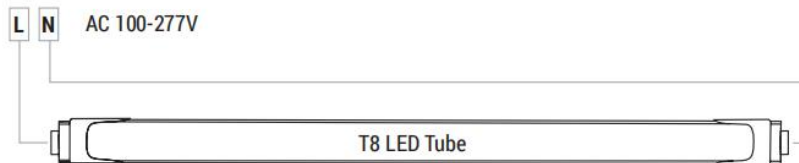
T8 LED TUBE Series - Bypass Ballast

DOUBLE SIDES LED SIGN TUBE, ENERGY EFFICIENT

Product Structure



Installation Instructions



1. Switch off power
2. Remove fluorescent tube
3. Bypass the ballast
4. Install LED tube
5. Switch on power



T8 LED TUBE Series - Bypass Ballast

DOUBLE SIDES LED SIGN TUBE, ENERGY EFFICIENT



Order details

Model No.	Wattage(W)	Length (C)	Lumen (lm)	Input Voltage	ETL
ZS-T8-D18in-15W	15	18 inch	1950	AC100-277V or 100-347V	YES
ZS-T8-D24in-18W	18	24 inch	2340	AC100-277V or 100-347V	YES
ZS-T8-D30in-20W	20	30 inch	2600	AC100-277V or 100-347V	YES
ZS-T8-D36in-20W	20	36 inch	2600	AC100-277V or 100-347V	YES
ZS-T8-D42in-25W	25	42 inch	3250	AC100-277V or 100-347V	YES
ZS-T8-D48in-28W	28	48 inch	3640	AC100-277V or 100-347V	YES
ZS-T8-D60in-36W	36	60 inch	4680	AC100-277V or 100-347V	YES
ZS-T8-D64in-40W	40	64 inch	5200	AC100-277V or 100-347V	YES
ZS-T8-D72in-40W	40	72 inch	5200	AC100-277V or 100-347V	YES
ZS-T8-D84in-48W	48	84 inch	6240	AC100-277V or 100-347V	YES
ZS-T8-D96in-50W	50	96 inch	6500	AC100-277V or 100-347V	YES
ZS-T8-D108in-55W	55	108 inch	7150	AC100-277V or 100-347V	YES
ZS-T8-D117in-56W	56	117 inch	7280	AC100-277V or 100-347V	YES
ZS-T8-D120in-60W	60	120 inch	7800	AC100-277V or 100-347V	YES



+1 281 840 8608
+1 833 927 2533

5755 Bonhomme Rd #412 Houston, TX 77036
10004 Gulf FWY, Houston, TX 77034

www.zaraled.com
info@zaraled.com

T8 LED TUBE Series - Bypass Ballast

DOUBLE SIDES LED SIGN TUBE, ENERGY EFFICIENT



Carton Packing for each tube

Dimension	PCS/CTN	Dimensions/CTN	Weight/CTN
18 inch	50	46×38.5×21 cm	6.50 KG
24 inch	50	61×38.5×21 cm	8.5 KG
30 inch	50	76×38.5×21 cm	10.5 KG
36 inch	50	91×38.5×21 cm	13 KG
42 inch	50	108×38.5×21 cm	15 KG
48 inch	25	121×20×21 cm	8 KG
60 inch	25	151×20×21 cm	10.5KG
64 inch	25	161×20×21 cm	11.5 KG
72 inch	25	181×20×21 cm	12.5 KG
84 inch	20	211×20×16 cm	11.8 KG
96 inch	20	241×20.5×16 cm	13 KG
108 inch	20	272×20.5×16 cm	15 KG
117 inch	20	272×20.5×16 cm	15 KG
120 inch	20	302×20.5×16 cm	17 KG



+1 281 840 8608
+1 833 927 2533

5755 Bonhomme Rd #412 Houston, TX 77036
10004 Gulf FWY, Houston, TX 77034

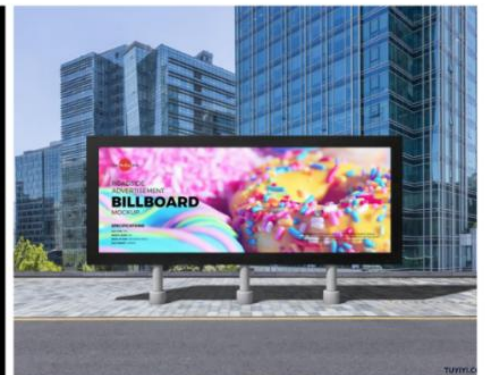
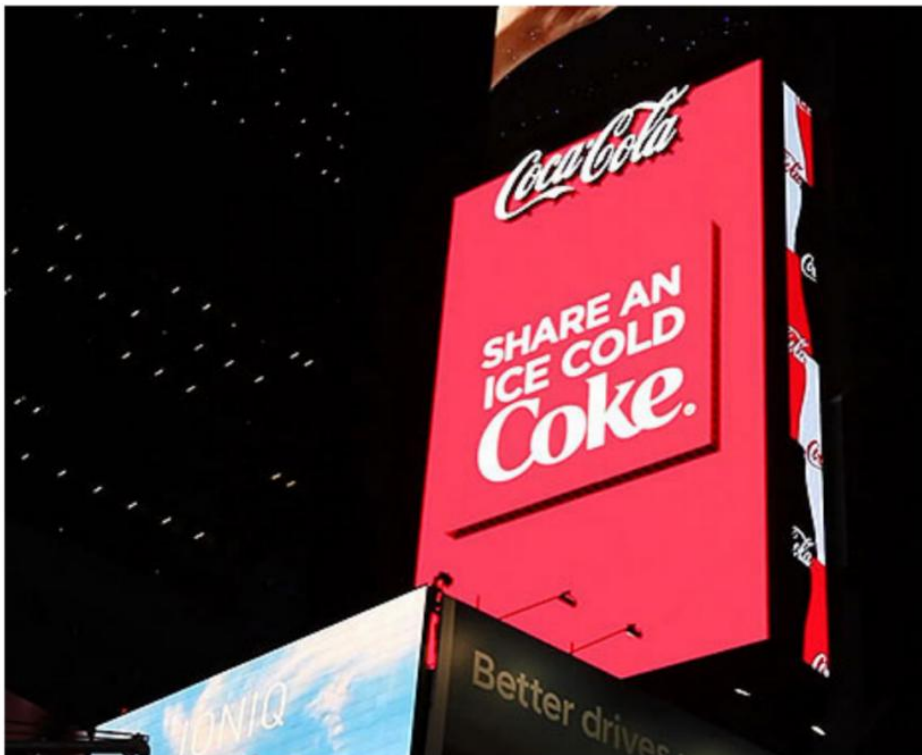
www.zaraled.com
info@zaraled.com

T8 LED TUBE Series - Bypass Ballast

DOUBLE SIDES LED SIGN TUBE, ENERGY EFFICIENT



Applications



DOUBLE SIDES SIGN LED Tubes used in life



+1 281 840 8608
+1 833 927 2533

5755 Bonhomme Rd #412 Houston, TX 77036
10004 Gulf FWY, Houston, TX 77034

www.zaraled.com
info@zaraled.com

T8 LED TUBE Series - Bypass Ballast

DOUBLE SIDES LED SIGN TUBE, ENERGY EFFICIENT



CAUTIONS

- Please read the product specification carefully first to confirm that the working environment is in line with the condition on the specification before it is used.
- Please confirm the input voltage and frequency before use.
- The light must be installed by professional personnel.
- If the power cord and case of the products are damaged, it will be regarded as disqualified product and should not be used.
- Dangerous high voltage. Non professional personnel should not repair.
- If external soft cable or wire of the product is damaged, the wire should be replaced by manufacturer or service agent or personnel with similar qualification to avoid danger.



+1 281 840 8608
+1 833 927 2533

5755 Bonhomme Rd #412 Houston, TX 77036
10004 Gulf FWY, Houston, TX 77034

www.zaraled.com
info@zaraled.com