

# Backlit LED Panel Light

Remote Control & App Multi functional Colorful Controller LED Panel Light

## DESCRIPTION

2' x 2' / 2' x 4' LED Panel Light

### The build

Durable solid frame, prefabricated paint with matte white finished. Slim profile design. Integrated T-Bar mounting clips. Easy installation.

### ELECTRICAL

Built with the highest quality driver that is Universal Voltage(100V-277V), the fixture uses long lasting, highly-efficient LEDs.

### DRIVER

Integrated premium driver on the back of the fixture.

### OPTICAL SYSTEM

Back-lit optics produces uniform light output, diffuser lens reduces glare and improve overall energy efficiency.

### ENERGY SAVINGS

Up to 50% energy savings than traditionally fluorescent fixtures, Little to no maintenance.



### WARRANTY

5 Years Limited Warranty, Rated for 50,000 hours.



## PRODUCT USER MANUDL

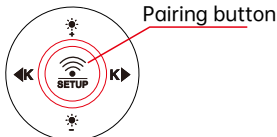
	<p><b>Product parameters:</b>                  Name: RGBCW 5-tone light panel light                  Input voltage: AC100-277V 60/50Hz                  Size(mm) and wattage: 603*603 40W / 603*1213 60W                  Support platform: Android &amp; iOS                  Communication type: BLE&amp;2.4G</p> <p><b>Remote control instructions:</b></p> <p>* This product does not have auxiliary lighting fixtures, so this button has no function</p>	<p><b>Before using the app to connect the lighting fixtures, please check the following:</b></p> <ul style="list-style-type: none"> <li>● The Bluetooth has been turned on;</li> <li>● Make sure the app (Flash smart) in available in your app store;</li> </ul>
--	--	---



## Pairing instructions:

### NO.1: Remote control pairing

- The remote control must be equipped with two 1.5V and No. 7 batteries in order to function properly.
- Turn on the physical switch and when the light is on, press the pairing button in the middle of the remote control. The light flashes twice, indicating successful pairing.



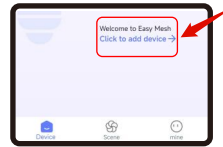
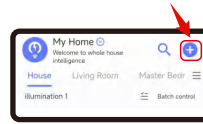
### NO.2: Pair using the app.

- 1 Scan the QR code below, download the flash smart app and install it.



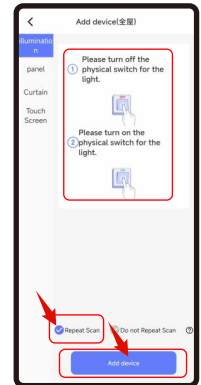
- 2 Turn on Bluetooth on your phone

- 3 Open the flash smart app, Click on the plus sign on the top right corner or click on 'Add Device' at the middle part of the app interface to add it.

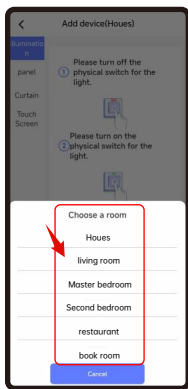


- 4 After clicking 'Add', follow the instructions in the app to add the device.

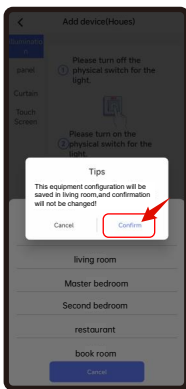
- 1 Turn off the switch, check the Repeat scan, and click add device.



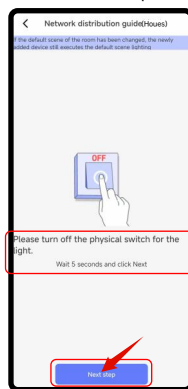
- 2 Select the location of the product.



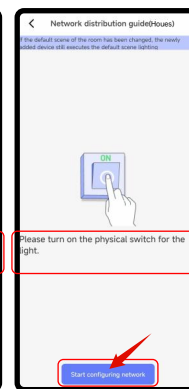
- 3 Click confirm.



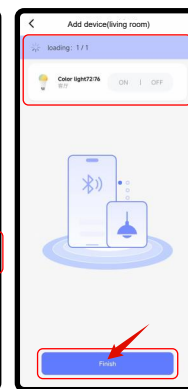
- 4 Follow the instructions and turn off the switch for 5 seconds, Click Next step.



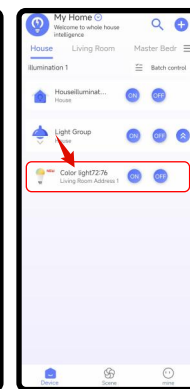
- 5 After waiting the 5 seconds, turn on the switch, Click Start configuring network.



- 6 Wait for the pairing process, click finish after its paired.



- 7 After paired, click on the device bar to enter the control interface.

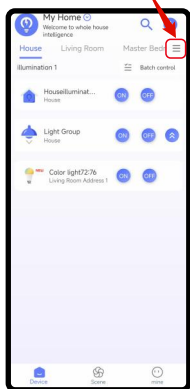


- 8 Control interface.

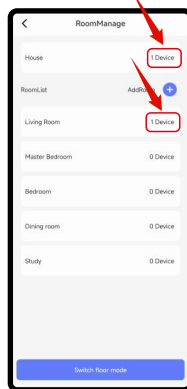


- 5 Delete device.

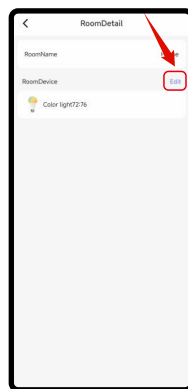
- 1 Click on the room management icon to the right of the room name to enter room management.



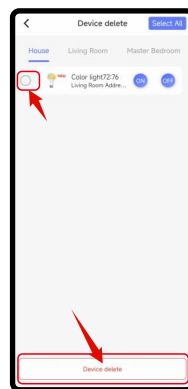
- 2 After entering room management, click on the room or whole house management where the device needs to be deleted.



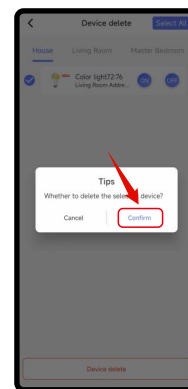
- 3 Click on edit.



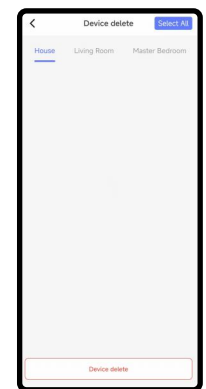
- 4 Select the device to be deleted and click on 'Device Delete'.



- 5 Click 'confirm'.



- 6 Complete deletion.



\* The pictures in the manual are for display reference only. The actual room name in the APP can be modified according to the customer's preferences.



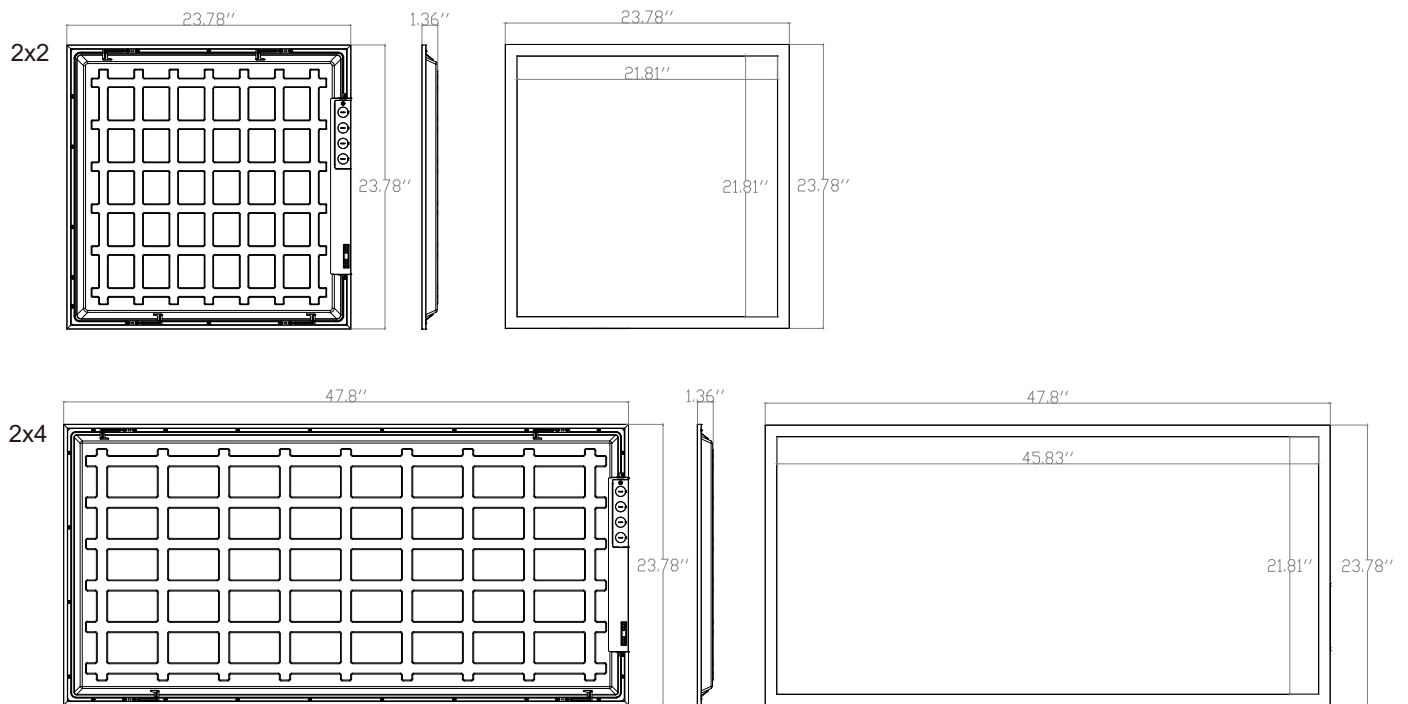
<b>Size</b>	2'x2'/2'x4'
<b>Wattage</b>	Max 40W / Max60W
<b>Beam Angle</b>	120°
<b>Input Voltage</b>	100-277V
<b>Frequency Range</b>	50/60Hz
<b>CRI</b>	>80

<b>PF</b>	>0.90
<b>THD</b>	<=20%
<b>Rating</b>	IP20
<b>Lifetime</b>	50,000 hours
<b>Operating Temperature</b>	-4°F to 113°F (-20°C to 45°C)

## ORDERING INFORMATION

Model	Size	Wattage	Voltage	Function	Packing/carton
ZS-BL2x2-F40-CC	2FTx2FT	40W	100-277V	2.4G Bluetooth	25.6*9.9*25.6 inch 6 pieces 1*40HQ Loading=4320pcs
ZS-BL2x4-F60-CC	2FTx4FT	60W	100-277V	2.4G Bluetooth	49.6*9.9*25.6 inch 6 pieces 1*40HQ Loading=2220pcs

## PHYSICALSPEIFICATIONS



## PRODUCT WEIGHT

<b>1 Piece-2'x2'</b>	<b>1 Piece-2'x4'</b>
4.10 lbs.	8.43 lbs.



# MOUNTING GUIDES

## Wiring Diagram

GND YELLOW & GREEN

AC - N WHITE

AC - L BLACK

LED DRIVER

LED LIGHT

**Electric Shock Attention**

Make sure the power is off before the installation  
The installation of this product are required to be operated by professionals

**POWER AND CCT SWITCH SETTINGS**

LED Driver

## INSTALLATION INSTRUCTION

**Step 1:** Make sure all power off before installation. Remove the ceiling tile where the fixture needs to be installed.

**Step 2:** Carefully place the light fixture on the T-grid, making sure it sits on it securely. Set the Wattage and CCT at your own preferences using the buttons on the driver.

**Step 3:** Lift the 4 buckles on the back of the panel up by 90° then bend the top part of the buckles 90° towards the direction where you can secure the light fixture to the T-bar.

**Step 4:** Open the driver's junction box and connect the AC wire to the driver correctly (L=black & N=white), close the Junction box to finish the installation.

